

VMware Virtual Desktop Client Installation and Use Apple iPad

Getting Started: Downloading the iPad App

1. Open the *App Store* app on your iPad and search for *VMware View for iPad*.



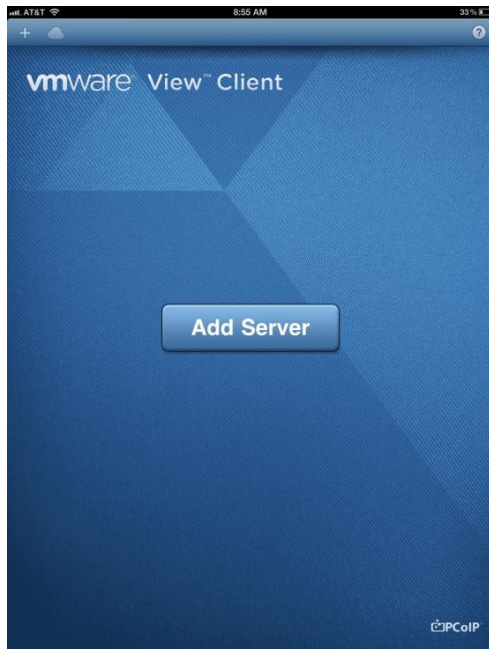
2. Tap the **Free** button next to the *VMware View for iPad* app, and then tap **Install**.



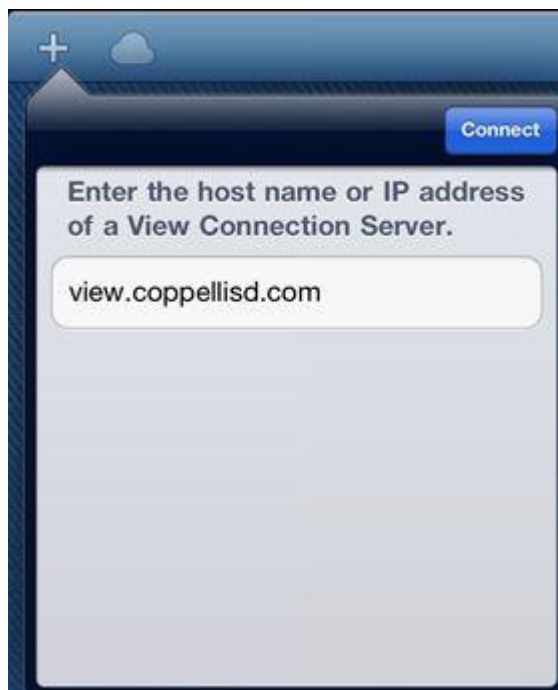
3. Enter your *Apple ID credentials*. After the app downloads and installs, open the *VMware View* app.



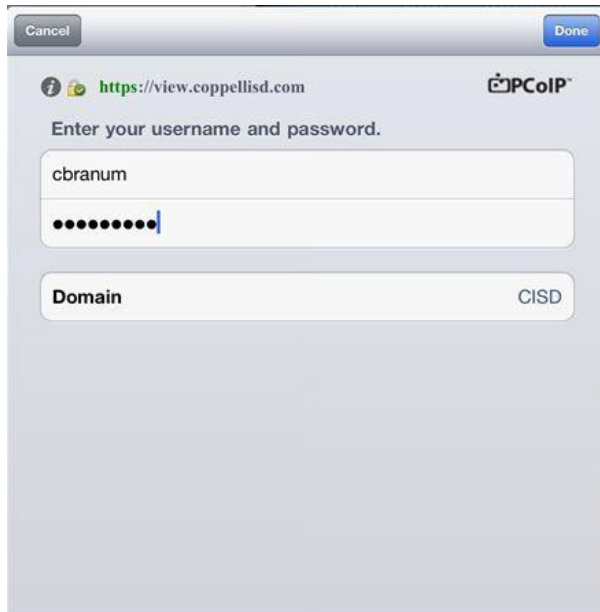
4. When the app opens, tap **Add Server**.



5. Enter the host name **view.coppellisd.com** and tap **Connect**.



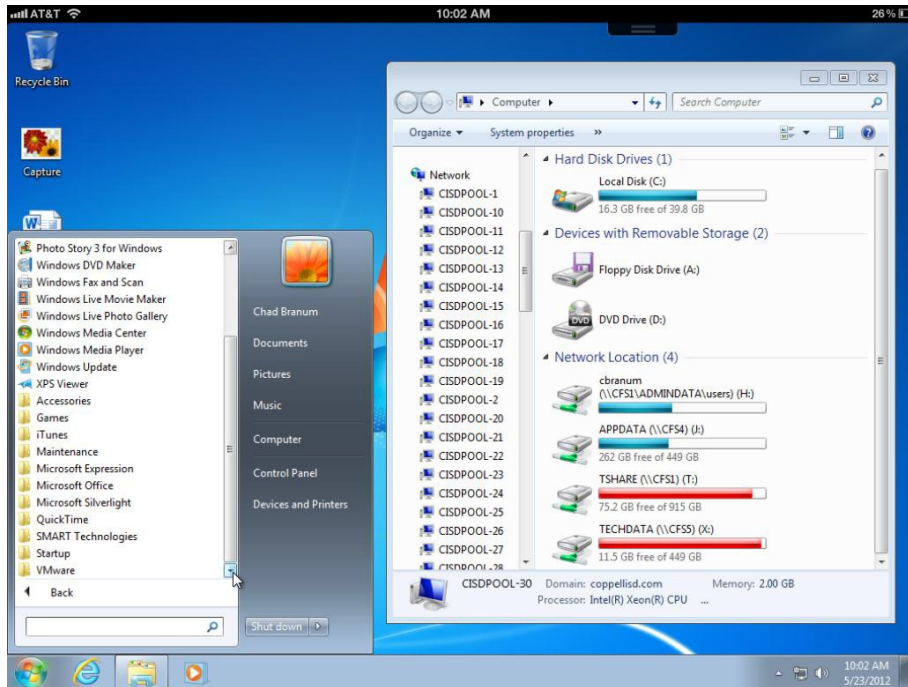
6. Enter your network username and password, and verify that *CISD* is listed for the domain. Tap **Done** and you will be logged into the Windows 7 virtual machine.



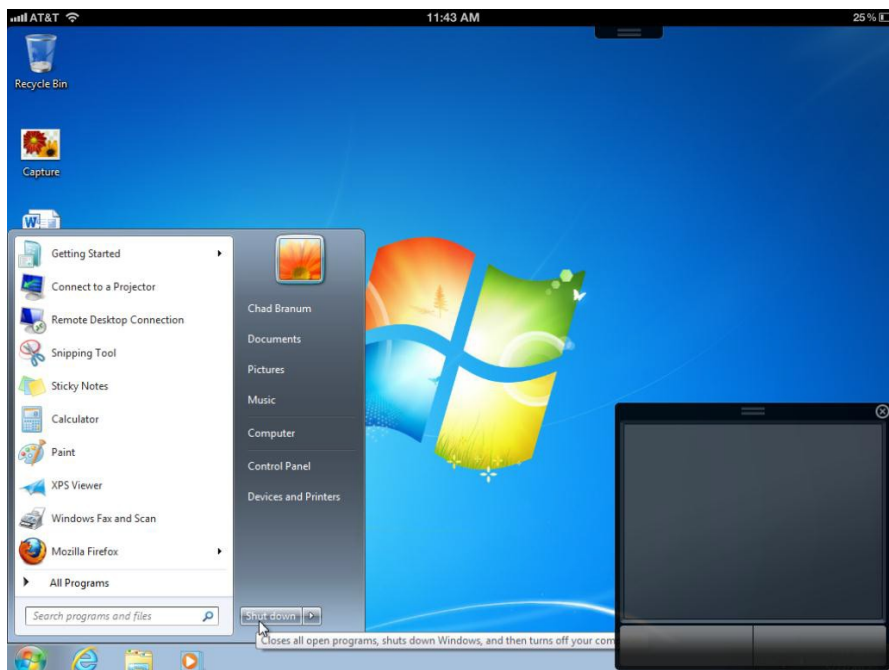
7. Tap the virtual machine you would like to use. Below are example pools.



8. After you are logged into the Windows 7 virtual machine, you have access to all of the same resources that you would if you were logged into a Windows 7 desktop or laptop within the District.



9. When you are ready to log off of the virtual machine, select the Windows **Start Button**, click the right arrow next to **Shut Down** and then **Log off**.

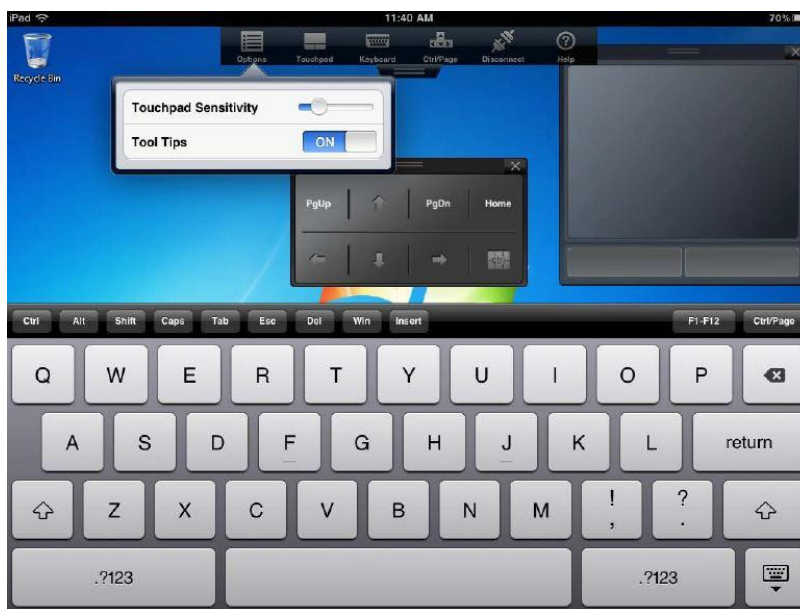


VMware View Dashboard

The VMware View for iPad application includes a dashboard at the top of the screen for more controls and settings. Tap its lower edge to expand the dashboard and use its settings. When not in use for a few seconds, the dashboard collapses up for screen space.



Tapping **Touchpad** or **Keyboard** on the dashboard will toggle a virtual touchpad or keyboard on and off. Selecting **Ctrl/Page** provides extra keyboard options, such as the *Control (Ctrl)*, *Page Up/Down* and arrow keys. For more advanced keys, including the *Function* keys, there is a row of advanced keys in the upper area of the virtual keyboard. The touchpad and Ctrl/Page interface are able to be dragged across the screen to allow for extra space. The *Options* menu allows adjustment of the virtual touchpad's sensitivity and tool tips settings.



Pressing the **Help** option brings up a dialog window explaining how basic gestures work in the application. Here is a brief summary of the gestures you can use:

- **Click** - Tap with one finger to make a regular left click.
- **Secondary click** - Tap with two fingers to make a right click.
- **Drag** - To drag, hold one finger down for about a second, until a small pulse appears, and then move your finger in the direction you want the mouse to drag.
- **Keyboard** - Instead of toggling the keyboard from the dashboard as explained above, you can tap with three fingers where you want to type, and the virtual keyboard will appear.
- **Accurate dragging** - Hold one finger, wait for the magnifying glass and position the cursor. Release, and then drag the hold cursor.
- **Scroll** - To scroll, drag two fingers in the direction you would like to scroll.
- **Rotate** - Rotating the iPad allows the environment to be used vertically or horizontally and will automatically configure the screen resolution accordingly.

In the virtual environment, drives are accessible in the same way as they are on a device within the district. Press **Start » Computer** to access your mapped drives.